

5



Follow the mountain and valley fold lines on the back to fold the paper

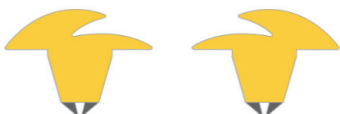


6L

6R



Follow the mountain and valley fold lines on the back to fold the paper



7B

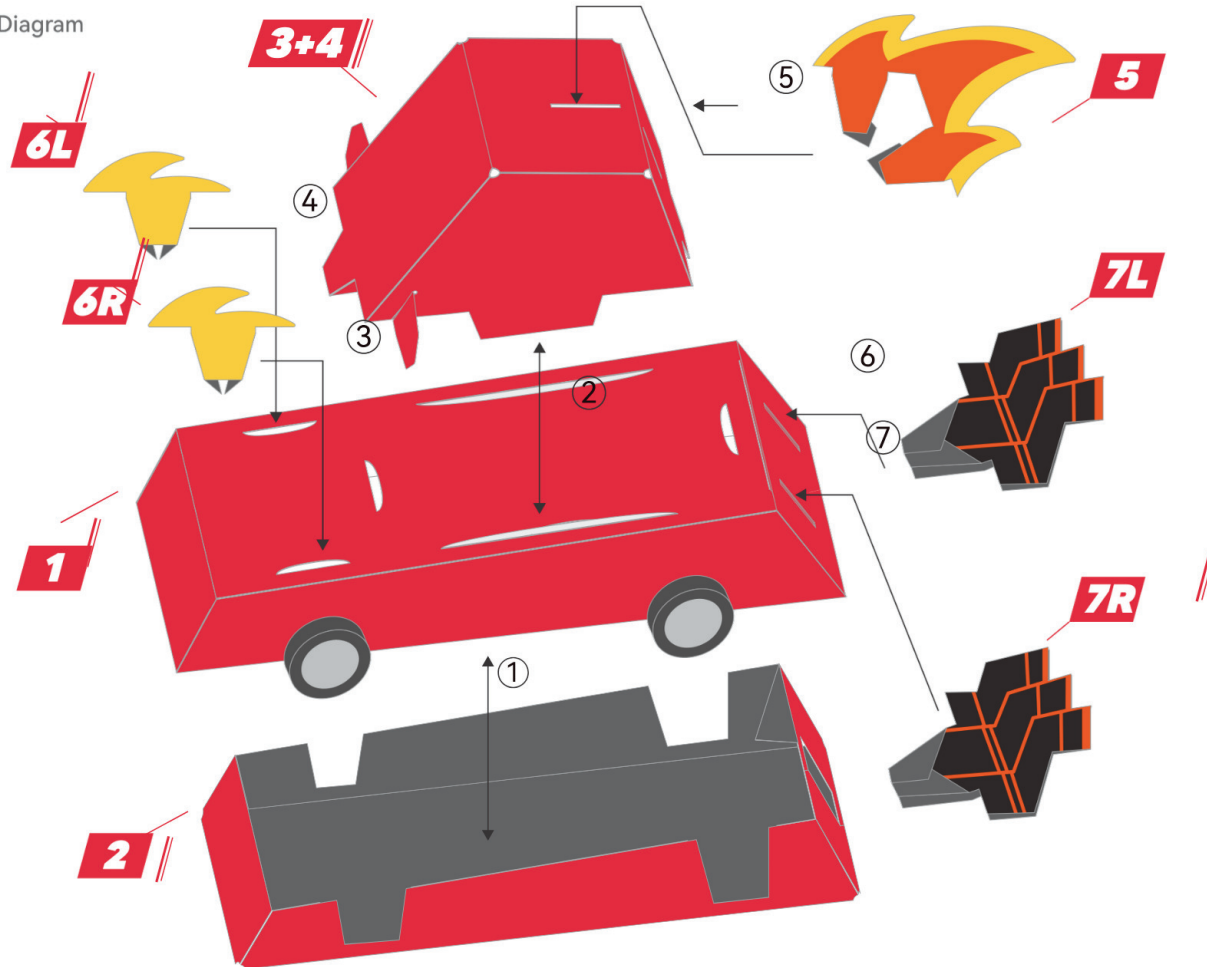
7L



Follow the mountain and valley fold lines on the back to fold the paper



Assembly Diagram



Sticker Application Diagram



Dream Racer Instructions Manual



Tips

Valley Fold

Fold the paper upward along the dotted line and the crease resembles a valley.



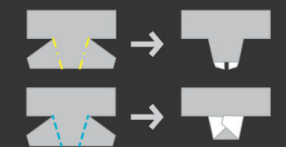
Mountain Fold

Fold the paper downward along the dotted line and the crease resembles a mountain.



Rotate

Rotate the paper and change its orientation.





START & FINISH



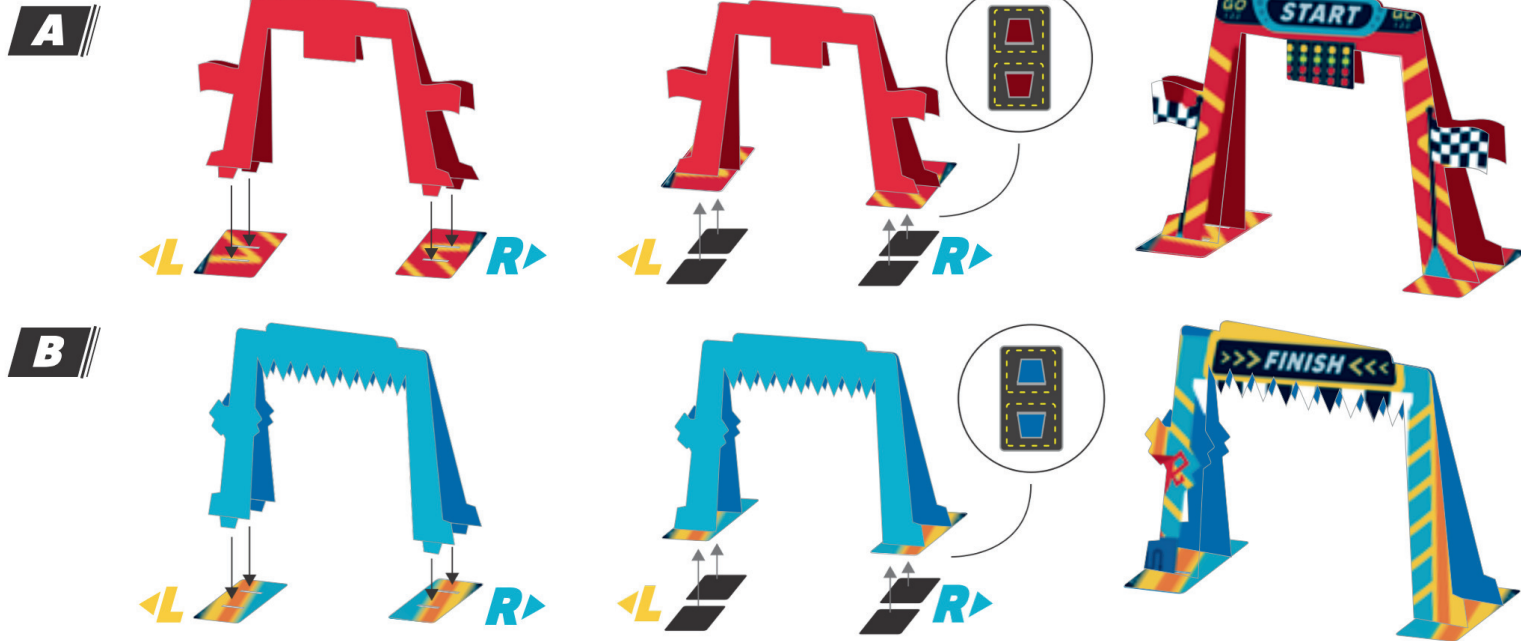
Product Components



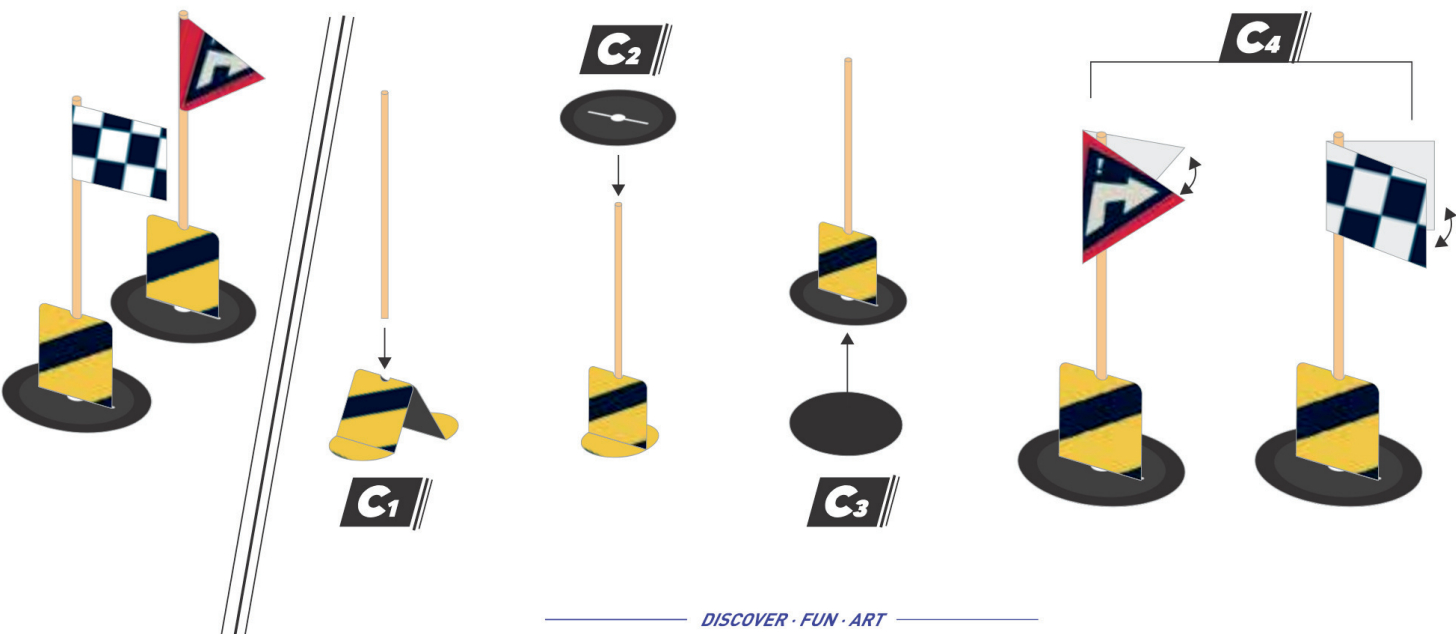
① Follow the mountain and valley fold lines on the back, then insert the four tabs at the bottom into the four slots of the base piece.

② Apply the stickers marked with **L** and **R** to their corresponding base pieces to secure the tabs and base pieces together.

③ Complete.



FLAGS



DISCOVER · FUN · ART



Blazing Pioneer

Product Components



Speed **MAX**

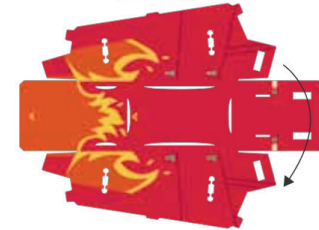
Handling **MAX**

Drift **MAX**

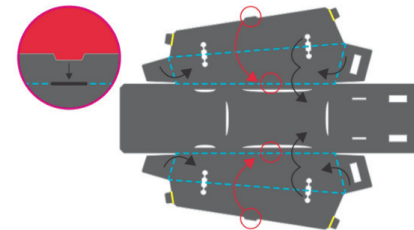


① Flip to the back side.

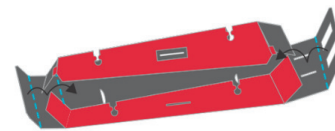
1



② As shown, fold both sides inward along the valley fold lines, and insert the small tabs on each side into the small slots marked with red circles.



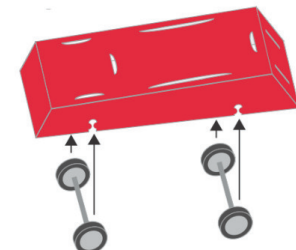
③ As shown, fold both ends inward along the valley fold lines.



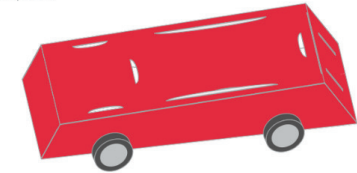
④ Flip to the front side.



⑤ Install the wheels.



⑥ Complete.

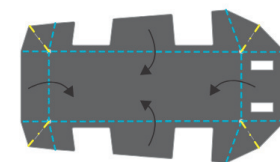


① Flip to the back side.

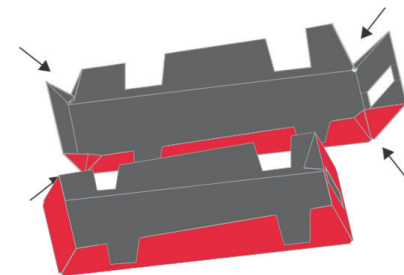
2



② Fold all sides inward along the mountain and valley fold lines.



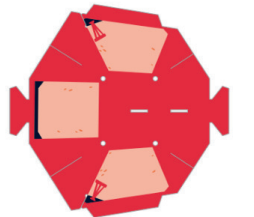
③ As shown, press all four corners inward



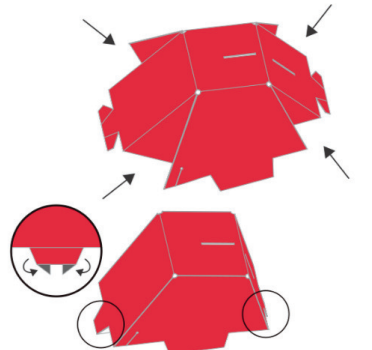
④ Complete.

3

① Remove paper piece #3, follow the mountain and valley fold lines on the back to fold the paper.



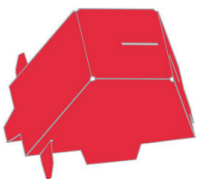
② Fold all four corners inward.



③ As shown, fold the small tabs on both sides backward.



④ Align Tab 4 with the slot and insert it completely.



⑤ Complete.

DISCOVER · FUN · ART

5L



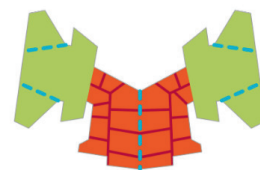
Follow the mountain and valley fold lines on the back to fold the paper



5R

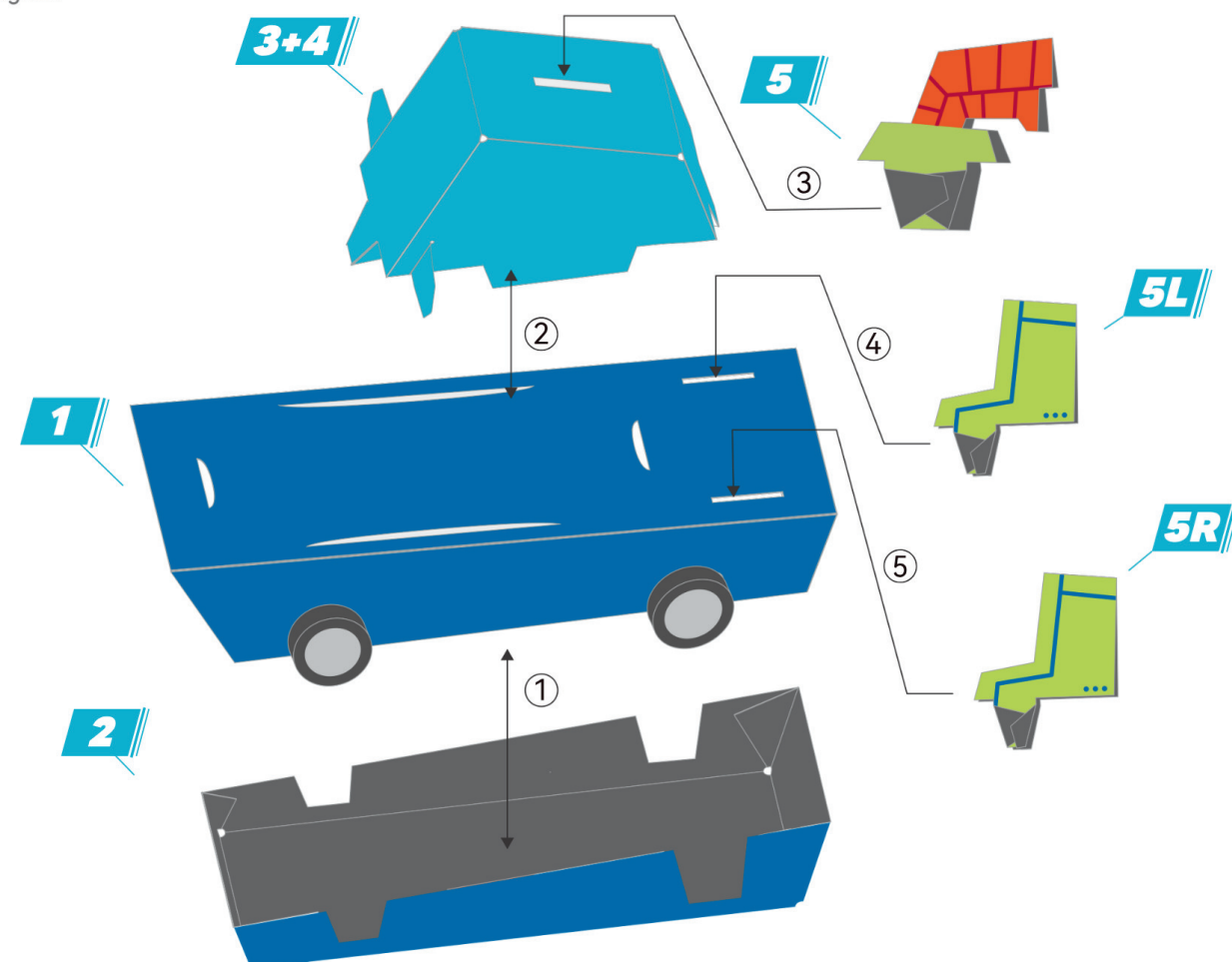


6

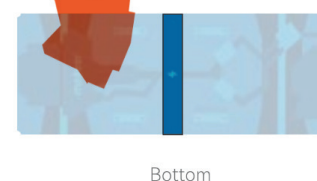


Follow the mountain and valley fold lines on the back to fold the paper

Assembly Diagram



Sticker Application Diagram



Space Ranger

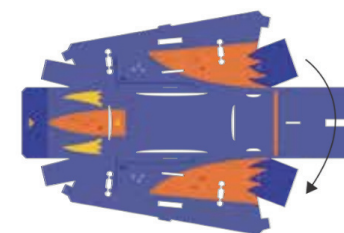


Product Components

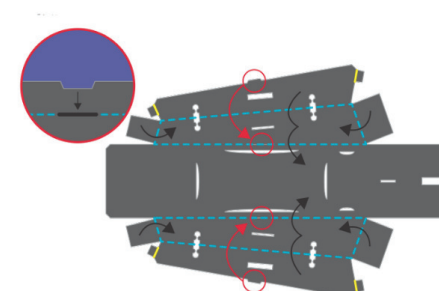


1

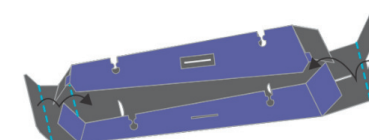
- Remove paper piece #1 and turn it over.



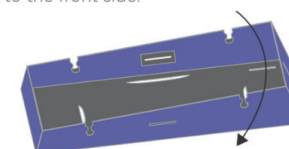
- As shown, fold both sides inward along the valley fold lines, and insert the small tabs on each side into the small slots marked with red circles.



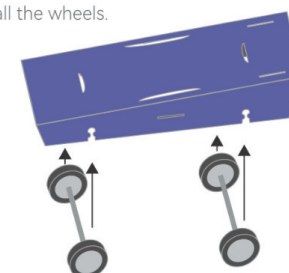
- As shown, fold both ends inward along the valley fold lines.



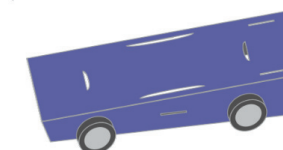
- Flip to the front side.



- Install the wheels.



- Complete.

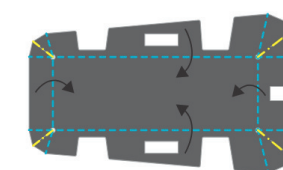


2

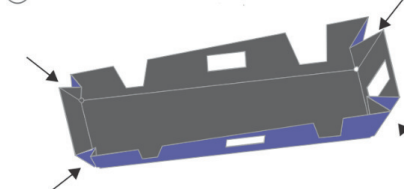
- Remove paper piece #2 and turn it over.



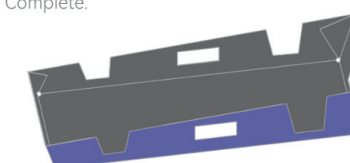
- Fold all sides inward along the mountain and valley fold lines.



- As shown, press all four corners inward

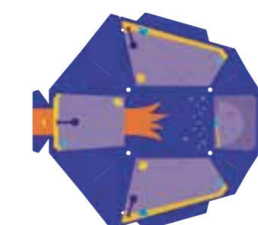


- Complete.

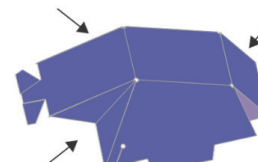


3

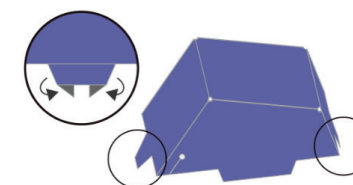
- Remove paper piece #3, follow the mountain and valley fold lines on the back to fold the paper.



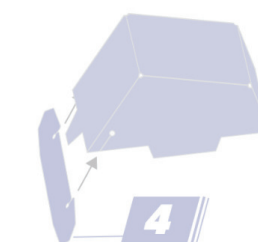
- Fold all four corners inward.



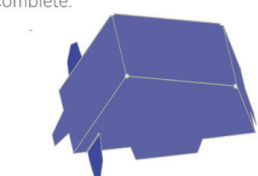
- As shown, fold the small tabs on both sides backward.

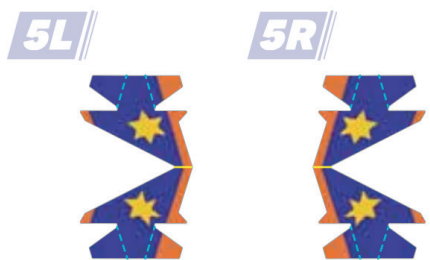


- Align Tab 4 with the slot and insert it completely.

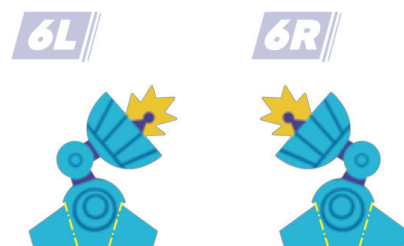
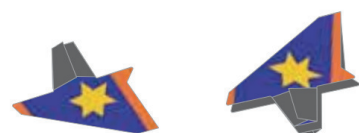


- Complete.

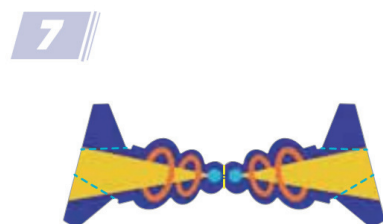
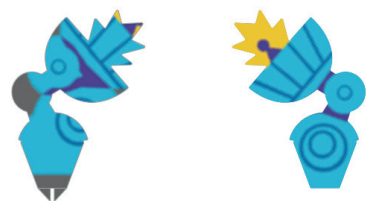




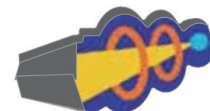
Follow the mountain and valley fold lines on the back to fold the paper.



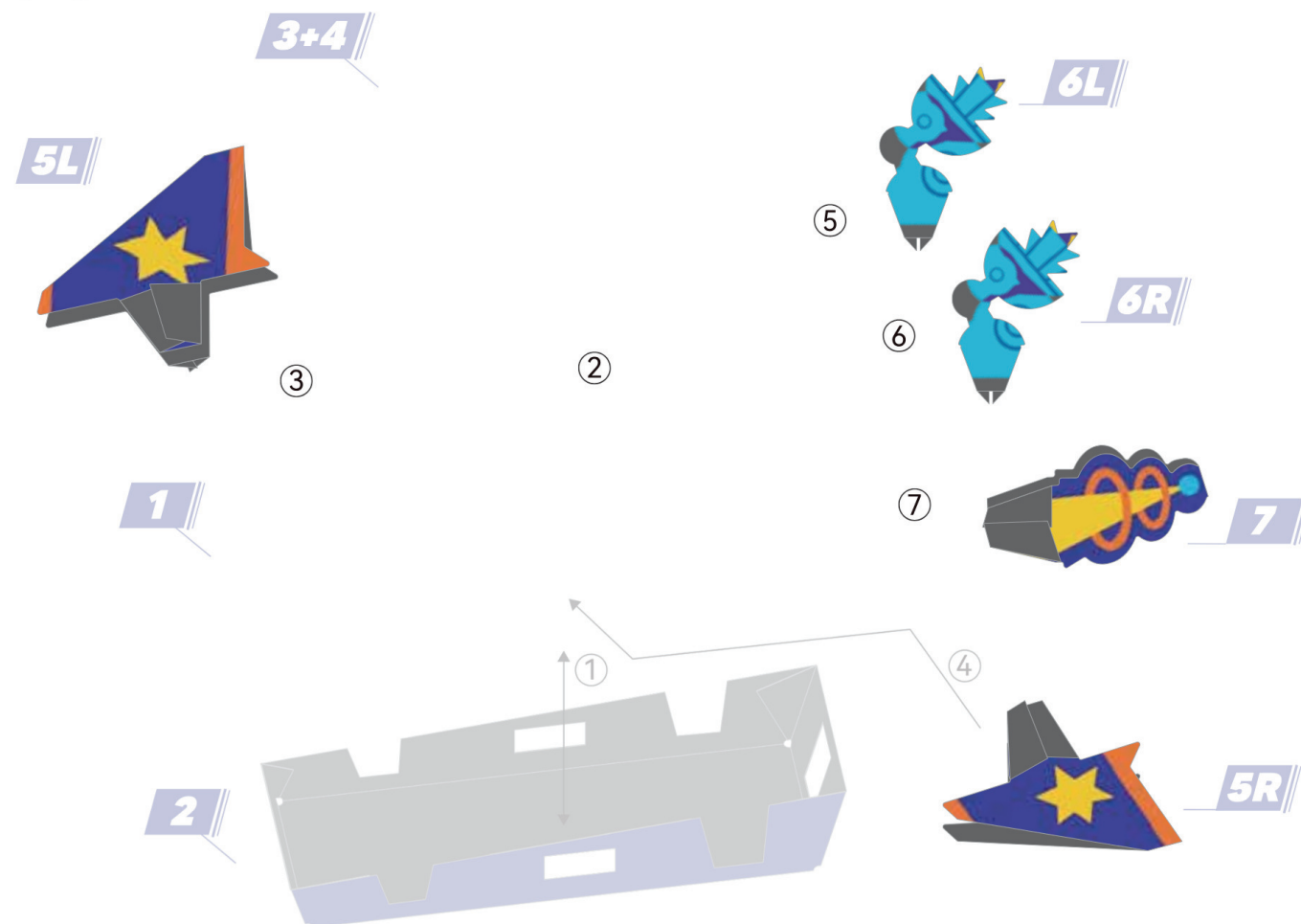
Follow the mountain and valley fold lines on the back to fold the paper.



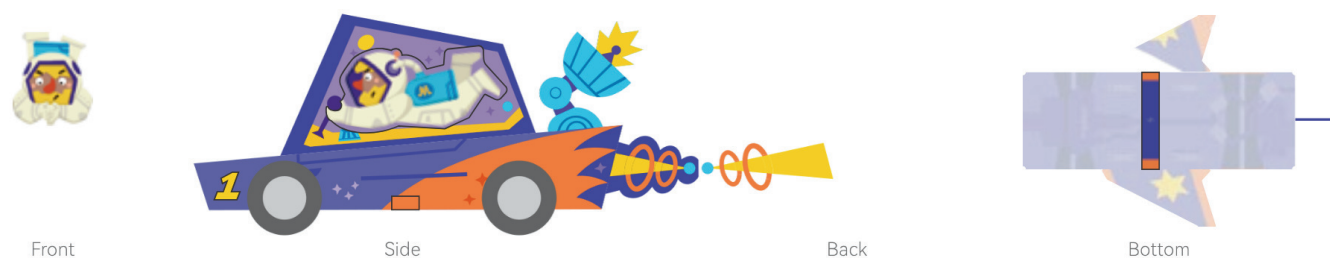
Follow the mountain and valley fold lines on the back to fold the paper.



Assembly Diagram



Sticker Application Diagram



Deep Sea Warrior



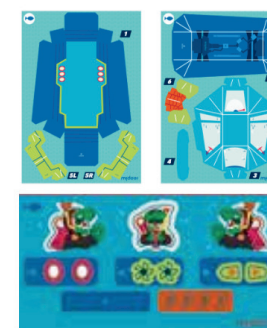
Speed / / / / / / / / / /

Handling / / / / / / / / / / MAX

Drift / / / / / / / /

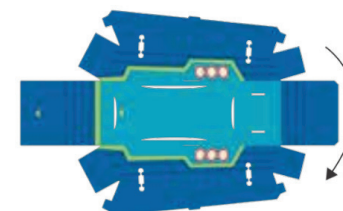


Product Components

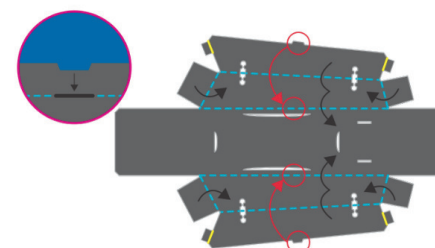


1

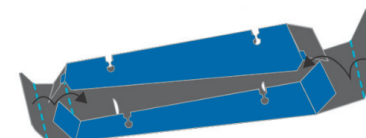
- Remove paper piece #1 and turn it over.



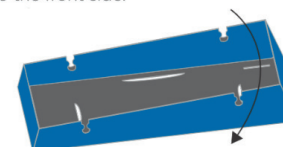
- As shown, fold both sides inward along the valley fold lines, and insert the small tabs on each side into the small slots marked with red circles.



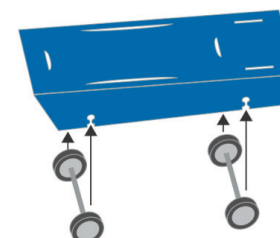
- As shown, fold both ends inward along the valley fold lines.



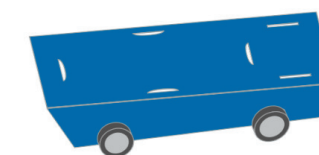
- Flip to the front side.



- Install the wheels.



- Complete.

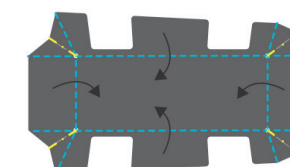


2

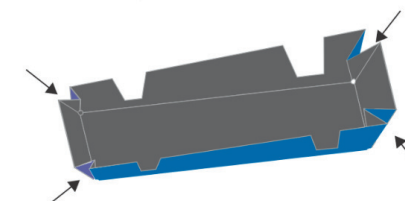
- Remove paper piece #2 and turn it over.



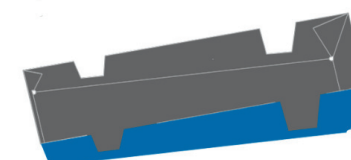
- Fold all sides inward along the mountain and valley fold lines.



- As shown, press all four corners inward

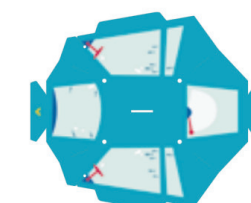


- Complete.

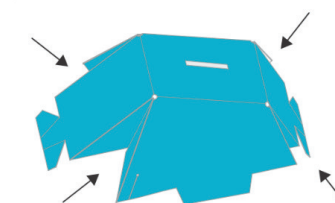


3

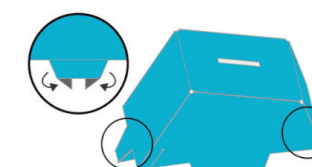
- Remove paper piece #3, follow the mountain and valley fold lines on the back to fold the paper.



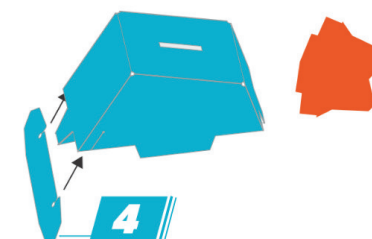
- Fold all four corners inward.



- As shown, fold the small tabs on both sides backward.



- Align Tab 4 with the slot and insert it completely.



- Complete.

